

Arrive safely

Installation and operating instructions

Cover hood

Overrun device

KFL12/14 and KFL20/27

Cover spread angle up to 31°

KNOTT)))

1.Proof of origin:

Knott GmbH
Bremsen – Achsen
Obingerstrasse 15
83125 Eggstätt
GERMANY
Tel. +49 8056 906-0
Fax. +49 8056 906-106
Email: info@knott.de
www.knott.de



Read the operating instructions and act accordingly. Keep the operating instructions for general use. Observe safety precautions and warnings.



“Caution” indicates work steps which must be complied with exactly in order to prevent persons being injured or components being damaged.



Special information on improved handling during operation, checking, adjustment and maintenance work.



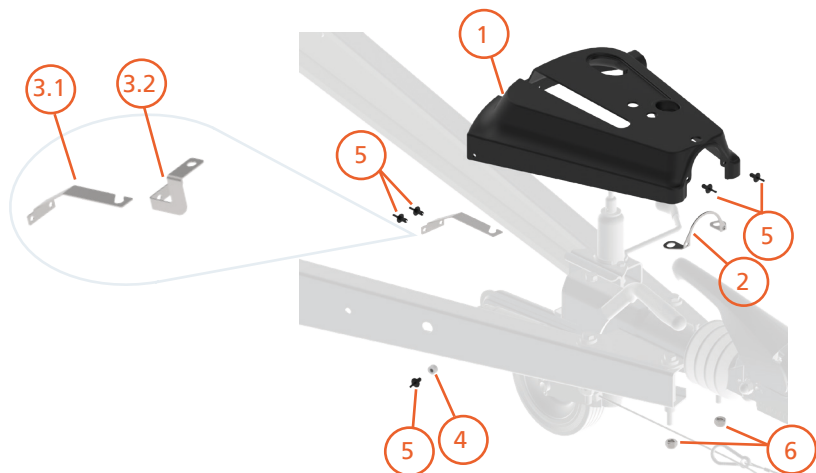
Safety-relevant component
We recommend installation by a specialist workshop!

Installation preparation:

Ensure that the caravan is resting on a level surface for installation. For greater freedom when working, it may be necessary to release and operate the handbrake. Therefore, protect the caravan adequately against rolling away.

Installing the expanding rivets:

Insert the expanding rivets into the boreholes as far as possible. Hammer in the pin precisely until it is flush with the rivet head.



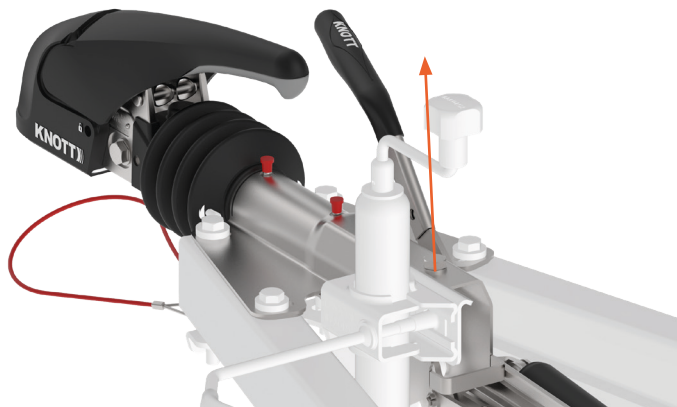
Item	Designation	Article No.	Quantity
1	Cover hood	210913.001	1
1 optional	Cover hood with hole pattern for LED	210913.002	
2	Clip	211010.001	1
3.1	Fixing bracket for KFL12/KFL14	211015.001	1
3.2	Fixing bracket for KFL20/KFL27	211016.001	
4	Spacer	211121.001	1
5	Expanding rivet	6902449X	5
6	Lock nut	D980.004	2

Overrun device KFL12 / KFL14

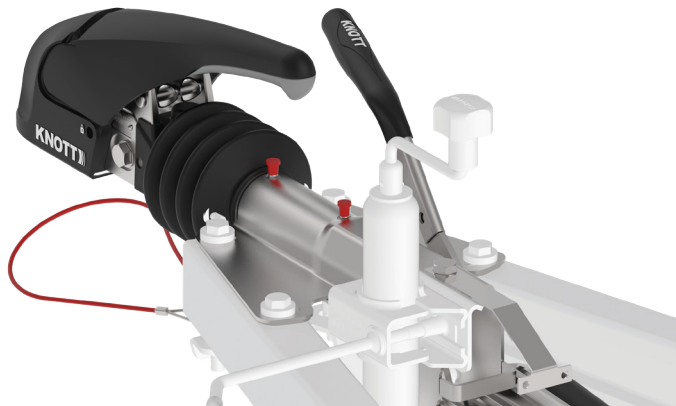


Step 1: Assembling the fixing bracket

Loosen the top screw (SW 19) on the housing of the overrun device and unscrew until you can hook the fixing bracket (pos. 3.1) under the spacer.



Next, retighten the screw with 75 Nm.

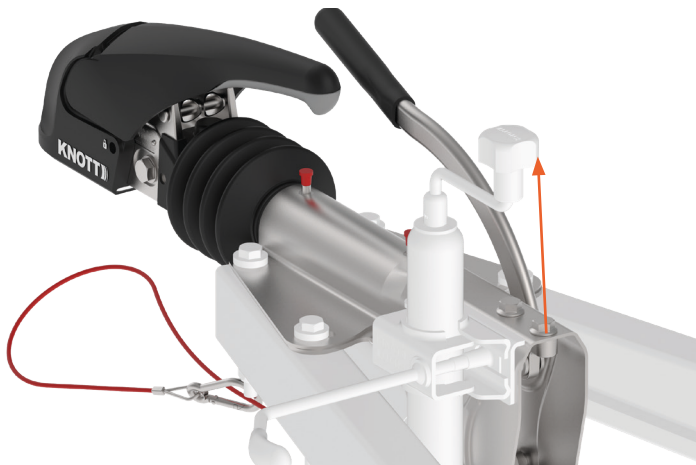


Overrun device KFL20 / KFL27

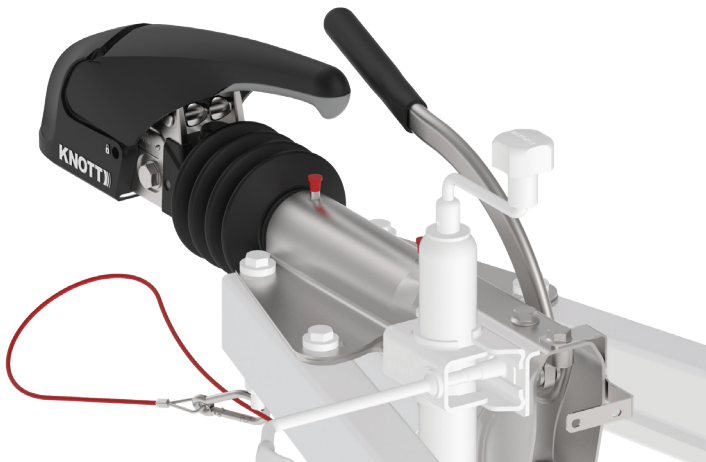


Step 1: Assembling the fixing bracket

Loosen the top screw (SW 19) on the housing of the overrun device and mount the fixing bracket (pos. 3.2).



Next, retighten the screw with 75 Nm.

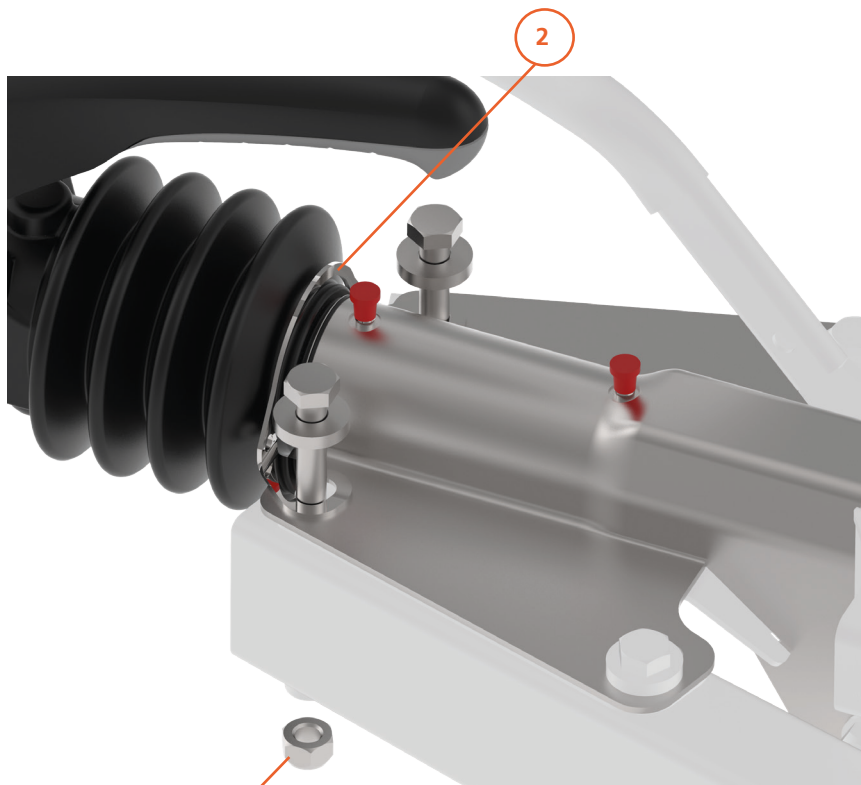




Step 2: Assembling the clip

To secure at the front, loosen both screws (SW 19) on the overrun device, unscrew them and screw on the clip (pos. 2).

Use new lock nuts (pos. 6) when screwing on. MA = 75 Nm (grade 8.8); MA = 110 Nm (grade 10.9)

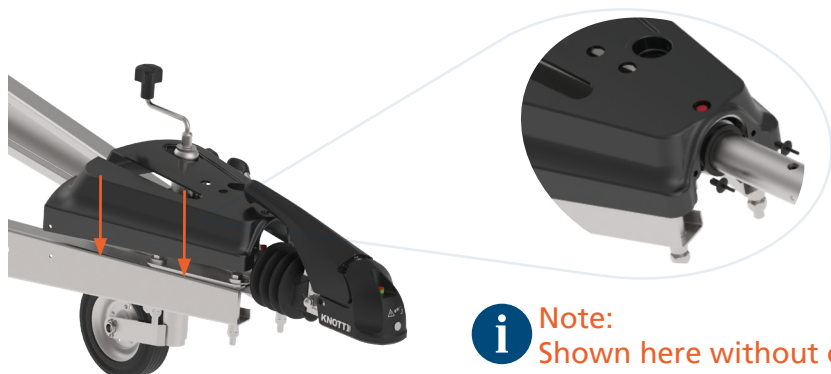


You must use new lock nuts.

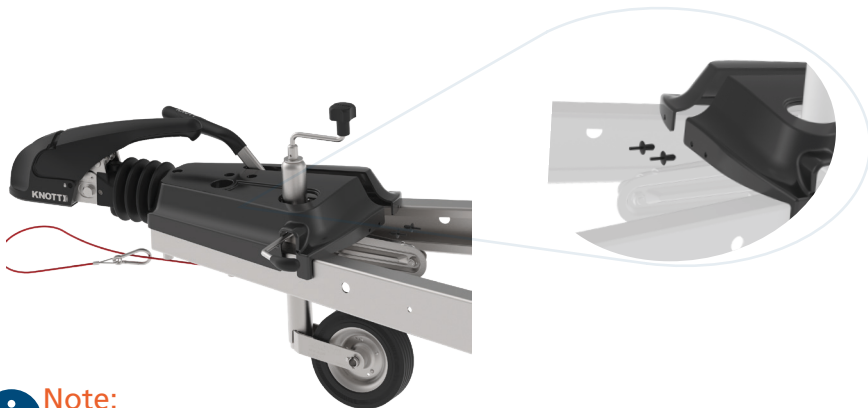


Step 3: Fitting and securing the cover hood

To fit the cover hood, engage the handbrake. Place the cover hood on the overrun device and secure to the clip (pos. 2) and fixing bracket (pos. 3) using the expanding rivets (pos. 5).

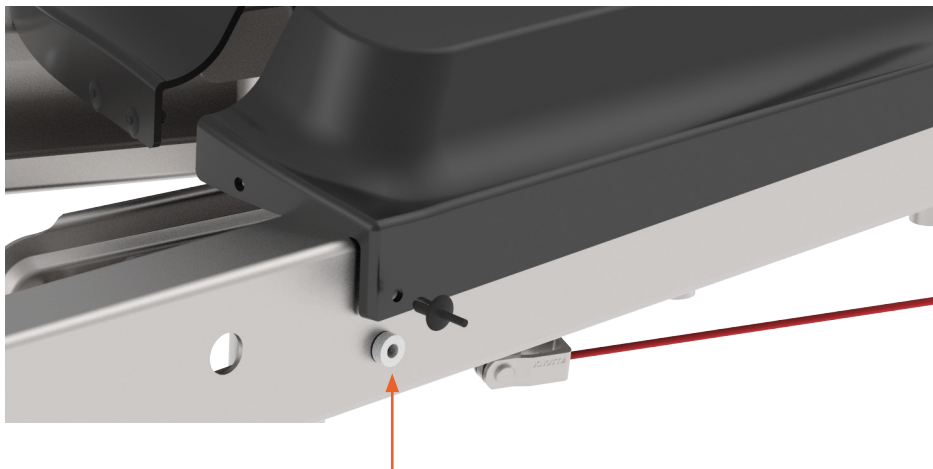


i Note:
Shown here without coupling and bellows.



Note:
Do not perform the last step if also installing a cover hood for the forked drawbar! The expanding rivets on the fixing bracket are fitted together with the forked drawbar cover hood.

Finally, secure the cover hood to the towbar at the rear right-hand section (seen in the direction of travel) using the expanding rivet (pos. 5). If there is any play between the towbar and the cover hood, insert the spacer (pos. 4) between the two elements and secure from outside with the expanding rivet.



NOTES:

Knott GmbH
Gutenbergstraße 21
93128 Regenstauf
Germany

Tel. +49 9402 9317-0
Fax. +49 9402 9317-20

info@knott.de
www.knott.de